



الاجابات نهاية الصفحة

Q1)Put (✓) in the front of correct statements and (x) in front of the wrong ones

1. Testing the program means making sure that the program is free of errors ()
2. ListBox and ComboBox share in "Items" property. ()
3. ListBox and and ComboBox share in " Suggest " property ()
4. GroupBox is the tool used in containing a group of controls, these controls have the same function on the Form. ()
5. ListBox is the tool used in containing a group of controls, these controls have the same function on the Form. ()
6. CheckBox can be used on the Form to choose the Gender of student male or female. ()
7. The program documentation is a set of procedures arranged logically for solving a specific problem. ()
8. The program testing is writing down all the steps taken to solve a problem. ()
9. The appearance of form window full screen during running the program. Because the property Windows State take a value maximize ()
10. AutoCompleteMode defines the method of list completing process for ComboBox tool ()
11. Label can be changed during program Runtime ()
12. The Events are the commands and instructions which are carried out when a certain procedure occurs to the object in VB.net language. ()

13. Flowcharts use words and lines with arrows to represent an Algorithm. ()
14. The procedures are the commands and instructions which are carried out when a certain procedure occurs to the object in VB.net language. ()
15. Compilers in Framework. Net are considered the environment of runtime for applications which are produced in VB.net language ()
16. Compilers are programmes that translate commands and instructions written by the programmer from the high level language into machine language ()
17. Framework.net contains Compilers, libraries and runtime environment ()
18. Pressing click and D-click are samples of some events that can occur to an object in VB.net language. ()
19. Disappearance of ControlBox of the title of Form Window in run mode. Because the property ControlBox take a value False ()
20. The rectangle symbol is used to represent both the start and the end. ()
21. RadioButton Let's the user select one alternative (option/choice) only from a group of options ()
22. The variable refers to a memory storage that holds a value. ()
23. The effect of (WindowState) property will not be active unless we start debugging the program. ()
24. Visual Basic.Net is considered object oriented language. ()
25. The Property BackColor is used in showing a certain text in the title bar of user window ()
26. The name, the size and colour of an object are all samples of properties of some objects in VB.net language. ()
27. ListBox items can't be arranged alphabetically ()

28. An algorithm is the first stage of solving problems ()
29. The name, the size and colour of an object are all samples of events that can occur to the object in VB.net language ()
30. To show the label control , the following statement was written -
(Lbl_Title. Visible = False) ()
31. Events and procedures which belong to any object in VB.net language are called properties. ()
32. We can't change the size of label1 control. Because the property AutoSize take a value True ()
33. The VB.net language is one of Event Driven languages ()
34. The VB.net language is the only high level language. ()
35. The VB.net language is considered a high level language because it is easy to learn ()
36. The VB.net language is used in producing Windows applications and Web applications. ()
37. Every Object is characterized by certain properties and certain behavior when a certain event occurs on it. ()

Q2) FILL IN THE BLANKS

1. in VB Command buttons and text box are examples of
2. Everything you place in the _____ will show in your program and decide the look of your program
3. key is used to Open (display) Properties window.
4.The procedure called into action when an event occurs
5. The appearance of the text on title bar for form in right direction. Because the property take a value True
6. The form window appears without Borders. Because the property take a value None
7. You can switch between code window and form window using
8. A (.....) control is used to select one or more options.

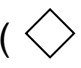

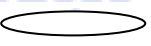
9. called Operating environment in computer's memory for running applications produced by the language of Visual Basic.net language
10. Hit _____ to start program with full compile option i.e. "start with full compile"
11. The default name of project is
12. is a procedure which contains a code that is carried out when a corresponding event occurs

Q3) Choose correct answer

1. To make the user read the information during the runtime, use
(textbox – label – msgbox).
2. To hide or show the " Button" tool, use the property(Name – Enabled – Visible).
3. The property which prevents the user from typing into the textbox is called(read only - modified – text).
4. In the IDE, any control can be placed on the form from
(Solution explorer , ToolBox , Properties).
5. To set the background color of the button control, the property.....is used.

(BackgroundImage , BackColor , ImageAlign).
6. Integrated Development Environment means :
(IPO — IDE — ERD).
7. A group of logically arranged procedures to be executed to attain a specific goal out of specific inputs..... a
(Algorithm — Problem Solving — Flow Chart)
8. Steps, activities and procedures to be done to reach an objective or an output - can be called:
a. problem definition b. problem c. problem solving
9. On drawing flowcharts we use:

- a. standard symbols and lines b. all geometric figures
c. one geometric figure
10. A set of procedures arranged logically for solving a specific problem
– can be called:
a. Problem b. algorithm c. program testing
11. When the program performs a certain action a number of times, this
process means.....
(Selection , Inputs , Iteration).
12. Making sure that the program is free of errors – can be called:
a. program testing b. program documentation c. algorithm
13. Object Name= value
(method – event – property).
14. problem-solving approach includes many of the terminologies, the
terminology that expresses the mathematical problem is:
a. Algorithm b. problem c. program design
15. To copy the contents of textbox 1 in the property text for label1 we
write the order
- a) textbox1.text=label1.text
b) label1= textbox1.text
c) label1.text = textbox1.text
16. Object Oriented programming language depends on:
a- using Windows applications. b- Using Web applications
c- Objects in computer memory.
17. You can produce Windows applications or Web applications by
using:
a- Objects in computer memory b- VB.net language
c- Properties and Events

18. Characteristics which describe the object such as size, name and colour are called:
- a- Properties b- procedures c- Events
19. Click on Button is:
- a- Property b- procedure c- Event
20. Commands and instructions which we want to carry out are called:
- A -properties B -producers c – Events
21. The Properties term refers to:
- a- Features that describe the object. b- Events that can occur to the object. c- Commands and instructions that are carried out
22. The Events term refers to:
- a- properties that describe the object. b- Events that can occur to the object. c- Commands and instructions that are carried out
23. The Procedures term refers to:
- a- properties that describe the object. b- Events that can occur to the object. c- Commands and instructions that are carried out
24. libraries, Compilers and Environment of runtime of applications are the most important components of:
- a- Object Oriented. b- Event Driven. c- Framework.net
25. IDE is called:
- a- Visual Basic.net b- Visual Studio. c- Framwork.net.
26. In the flow chart, the symbol which stands for a process operation is the symbol number.....
- ( ,  , ).
27. Writing down all the steps taken to solve a problem errors – can be called:
- a. program documentation b. program testing c. flowcharts

Q4) What is the syntax for

- adjusting the properties programmatically?
- The property BackColor take the value Red for the form1.
- The property RightToLeft take the value True for the current
- The property ForeColor take the value Yellow for label1.

Q5) Draw A flowchart for a program that obtains a number from the user. Determine the number type (positive or negative) and print the result.





الاجابات نهاية الصفحة

Q1)Put (✓) in the front of correct statements and (x) in front of the wrong ones

1. Testing the program means making sure that the program is free of errors (✓)
2. ListBox and ComboBox share in "Items" property. (✓)
3. ListBox and and ComboBox share in " Suggest " property (x)
4. GroupBox is the tool used in containing a group of controls, these controls have the same function on the Form. (✓)
5. ListBox is the tool used in containing a group of controls, these controls have the same function on the Form. (x)
6. CheckBox can be used on the Form to choose the Gender of student male or female. (x)
7. The program documentation is a set of procedures arranged logically for solving a specific problem. (x)
8. The program testing is writing down all the steps taken to solve a problem. (x)
9. The appearance of form window full screen during running the program. Because the property Windows State take a value maximize (✓)
10. AutoCompleteMode defines the method of list completing process for ComboBox tool (✓)
11. Label can be changed during program Runtime (x)
12. The Events are the commands and instructions which are carried out when a certain procedure occurs to the object in VB.net language. (x)

13. Flowcharts use words and lines with arrows to represent an Algorithm. (x)
14. The procedures are the commands and instructions which are carried out when a certain procedure occurs to the object in VB.net language. (x)
15. Compilers in Framework. Net are considered the environment of runtime for applications which are produced in VB.net language (x)
16. Compilers are programmes that translate commands and instructions written by the programmer from the high level language into machine language (✓)
17. Framework.net contains Compilers, libraries and runtime environment (✓)
18. Pressing click and D-click are samples of some events that can occur to an object in VB.net language. (✓)
19. Disappearance of ControlBox of the title of Form Window in run mode. Because the property ControlBox take a value False (✓)
20. The rectangle symbol is used to represent both the start and the end. (x)
21. RadioButton Let's the user select one alternative (option/choice) only from a group of options (✓)
22. The variable refers to a memory storage that holds a value. (✓)
23. The effect of (WindowState) property will not be active unless we start debugging the program. (✓)
24. Visual Basic.Net is considered object oriented language. (✓)
25. The Property BackColor is used in showing a certain text in the title bar of user window (x)
26. The name, the size and colour of an object are all samples of properties of some objects in VB.net language. (✓)

- 27. ListBox items can't be arranged alphabetically (x)
- 28. An algorithm is the first stage of solving problems (x)
- 29. The name, the size and colour of an object are all samples of events that can occur to the object in VB.net language (x)
- 30. To show the label control , the following statement was written - (Lbl_Title. Visible = False) (x)
- 31. Events and procedures which belong to any object in VB.net language are called properties. (x)
- 32. We can't change the size of label1 control. Because the property AutoSize take a value True (✓)
- 33. The VB.net language is one of Event Driven languages (✓)
- 34. The VB.net language is the only high level language. (x)
- 35. The VB.net language is considered a high level language because it is easy to learn (✓)
- 36. The VB.net language is used in producing Windows applications and Web applications. (✓)
- 37. Every Object is characterized by certain properties and certain behavior when a certain event occurs on it. (✓)

Q2) FILL IN THE BLANKS

- 13. in VB Command buttons and text box are examples of **Controls**
- 14. Everything you place in the _____ will show in your program and decide the look of your program **form**
- 15. **F4** key is used to Open (display) Properties window.
- 16. **Event Handler** The procedure called into action when an event occurs
- 17. The appearance of the text on title bar for form in right direction. Because the property **RightToLeft** take a value True

18. The form window appears without Borders. Because the property **FormBorderStyle** take a value None
19. You can switch between code window and form window using **Project Explorer**
20. A **(CheckBox)** control is used to select one or more options.
21. **Runtime** called Operating environment in computer's memory for running applications produced by the language of Visual Basic.net language
22. Hit _____ to start program with full compile option i.e. "start with full compile" **Ctrl + F5**
23. The default name of project is **WindowsApplication1**
24. **Event handler** is a procedure which contains a code that is carried out when a corresponding event occurs

Q3) Choose correct answer

1. To make the user read the information during the runtime, use
(**textbox** – label – msgbox).
2. To hide or show the " Button" tool, use the property(Name – Enabled – **Visible**).
3. The property which prevents the user from typing into the textbox is called(**read only** - modified – text).
4. In the IDE, any control can be placed on the form from
(Solution explorer , **ToolBox** , Properties).
5. To set the background color of the button control, the property.....is used.

(BackgroundImage , **BackColor** , ImageAlign).
6. Integrated Development Environment means :
(IPO — **IDE** — ERD).
7. A group of logically arranged procedures to be executed to attain a

specific goal out of specific inputs..... a

(**Algorithm** — Problem Solving — Flow Chart)

8. Steps, activities and procedures to be done to reach an objective or an output - can be called:
- a. problem definition b. problem c. **problem solving**
9. On drawing flowcharts we use:
- a. **standard symbols and lines** b. all geometric figures
 - c. one geometric figure
10. A set of procedures arranged logically for solving a specific problem – can be called:
- b. Problem b. **algorithm** c. program testing
11. When the program performs a certain action a number of times, this process means.....
- (Selection , Inputs , **Iteration**).
12. Making sure that the program is free of errors – can be called:
- a. **program testing** b. program documentation c. algorithm
13. Object Name = value
- (method – event – **property**).
14. problem-solving approach includes many of the terminologies, the terminology that expresses the mathematical problem is:
- b. Algorithm b. **problem** c. program design
15. To copy the contents of textbox 1 in the property text for label1 we write the order
- a) textbox1.text=label1.text
 - b) label1= textbox1.text
 - c) **label1.text = textbox1.text**
16. Object Oriented programming language depends on:
- a- using Windows applications. b- Using Web applications

- c- **Objects in computer memory.**
17. You can produce Windows applications or Web applications by using:
b- Objects in computer memory b- **VB.net language**
c- Properties and Events
18. Characteristics which describe the object such as size, name and colour are called:
b- **Properties** b- procedures c- Events
19. Click on Button is:
b- Property b- procedure **c- Event**
20. Commands and instructions which we want to carry out are called:
A -properties B -**producers** c – Events
21. The Properties term refers to:
b- **Features that describe the object.** b- Events that can occur to the object. c- Commands and instructions that are carried out
22. The Events term refers to:
b- properties that describe the object. b- **Events that can occur to the object.** c- Commands and instructions that are carried out
23. The Procedures term refers to:
b- properties that describe the object. b- Events that can occur to the object. c- **Commands and instructions that are carried out**
24. libraries, Compilers and Environment of runtime of applications are the most important components of:
a- Object Oriented. b- Event Driven. c- **Framework.net**
25. IDE is called:
a- Visual Basic.net b- **Visual Studio.** c- Framwork.net.
26. In the flow chart, the symbol which stands for a process operation is the symbol number.....

( ,  , ).

27. Writing down all the steps taken to solve a problem errors – can be called:

- b. **program documentation** b. program testing c. flowcharts

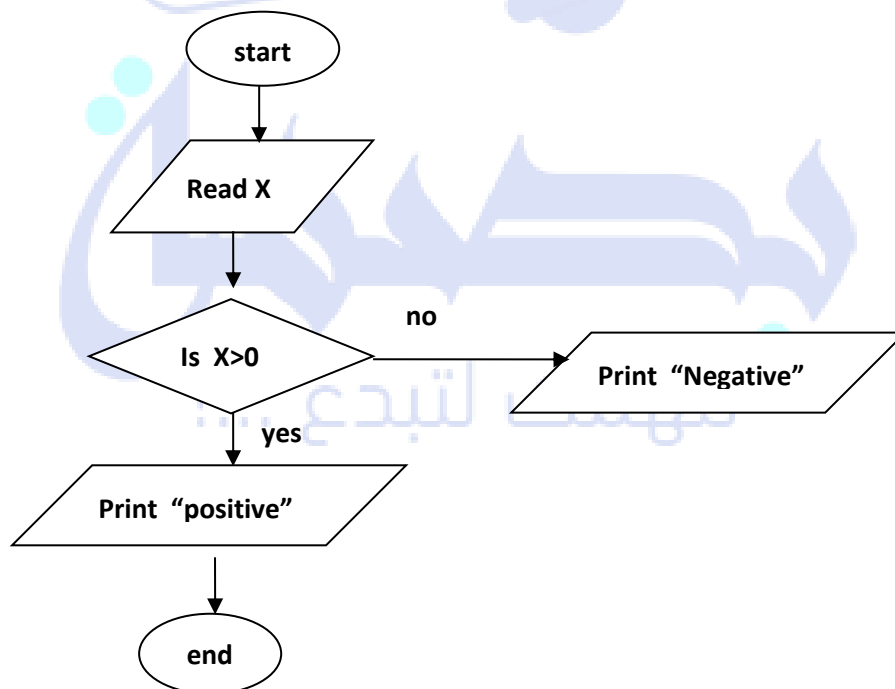
Q4) What is the syntax for

- adjusting the properties programmatically?

ControlName.Property=Value

- The property BackColor take the value Red for the form1.
(Form1.BackColor=Color.Red)
- The property RightToLeft take the value True for the current
Form1. Form. RightToLeft=True
- The property ForeColor take the value Yellow for label1.
(Label1.foeColor=Color.Yellow)

Q5) Draw A flowchart for a program that obtains a number from the user. Determine the number type (positive or negative) and print the result.





بسم الله
نلهمك لتبدع ...!